

## Week ending 1 and 8 August 2018


This incident summary provides information on reportable incidents and safety advice for the NSW mining industry. To report an incident to the NSW Resources Regulator: phone 1300 814 609 24 hours a day, 7 days a week.

### At a glance

High level summary of emerging trends and our recommendations to operators.

Type	Number
Reportable incident total	76
Summarised incident total	7

### Summarised incidents

Incident type	Summary	Recommendations to industry
Dangerous incident SinNot-2018/01261	<p>A haul truck hit a windrow after the operator claimed to have had a microsleep.</p> 	<p>When incidents occur and a microsleep is suspected, the mine must investigate and confirm that a microsleep has occurred and no other issue has contributed to the incident. If the microsleep is confirmed, the mine must comply with clause 11 Work Health and Safety (Mines and Petroleum Sites) Regulation and review control measures including the mine's fatigue management plan.</p>
Dangerous incident SinNot-2018/01255	<p>Falling coal hit three workers while they were hanging rib mesh in an underground coal mine. One worker was knocked to the ground, another worker was hit on the elbow and a third worker suffered a strain injury.</p>	<p>While installing support underground, workers must not place themselves in a position where they are under unsupported strata. The use of temporary strata support must be considered when developing job procedures.</p>



Dangerous incident  
SinNot-2018/01253

A fire broke out on a bulldozer at an open cut coal mine. It was operating at the dig face pit floor when the operator saw smoke coming from the engine bay area. The machine was shut down and the onboard fire suppression was manually activated. The operator used a hand-held fire extinguisher to extinguish the remaining flames.

The Resources Regulator has developed and issued a discussion paper that considers strategies to reduce the incidence of fires on mobile plant in NSW mines. For more information [click here](#).

Serious injury  
SinNot-2018/01242

A contractor fell from the deck of a lowered scissor lift in a processing plant. The worker had unbolted the handrail and was manoeuvring the machine around steelwork. When the machine stopped, the handrail moved and in the process, the worker fell forward off the scissor lift. The contractor's harness he was wearing was not attached to the machine.

Operators must not modify safety devices fitted to plant without following mine procedures.

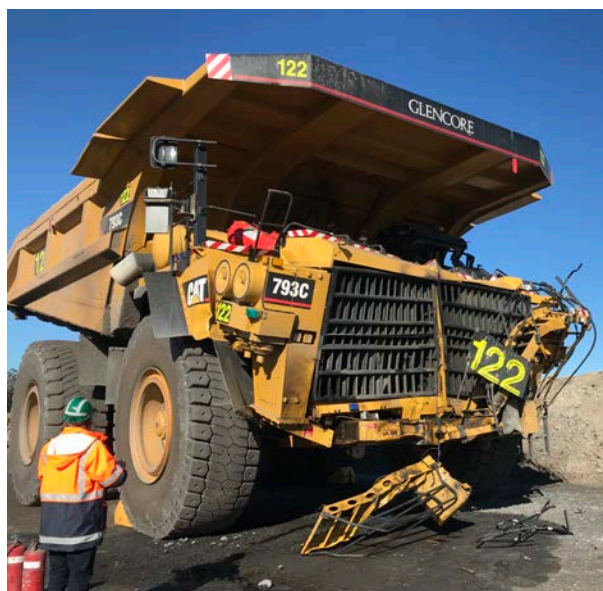
Mines must have systems in place to risk assess, control and manage changes required to safety devices.



Dangerous incident  
SinNot-2018/01208

A truck driver suffered a broken tibia and knee cap when the haul truck he was driving collided with the rear of a stationary haul truck. A truck had stopped to give way to other vehicles at an intersection in accordance with site rules. As the second truck approached, it collided with the tray of the stationary truck. The stationary truck was pushed forward about 17 metres. The rear haul truck was substantially damaged and the site's mines rescue team was required to extract the injured worker from the cab.

An investigation has commenced and [Investigation Information Release](#) has been published.



Dangerous incident  
SinNot-2018/01207

A detonator was identified as missing when the mining face was being loaded with explosives.

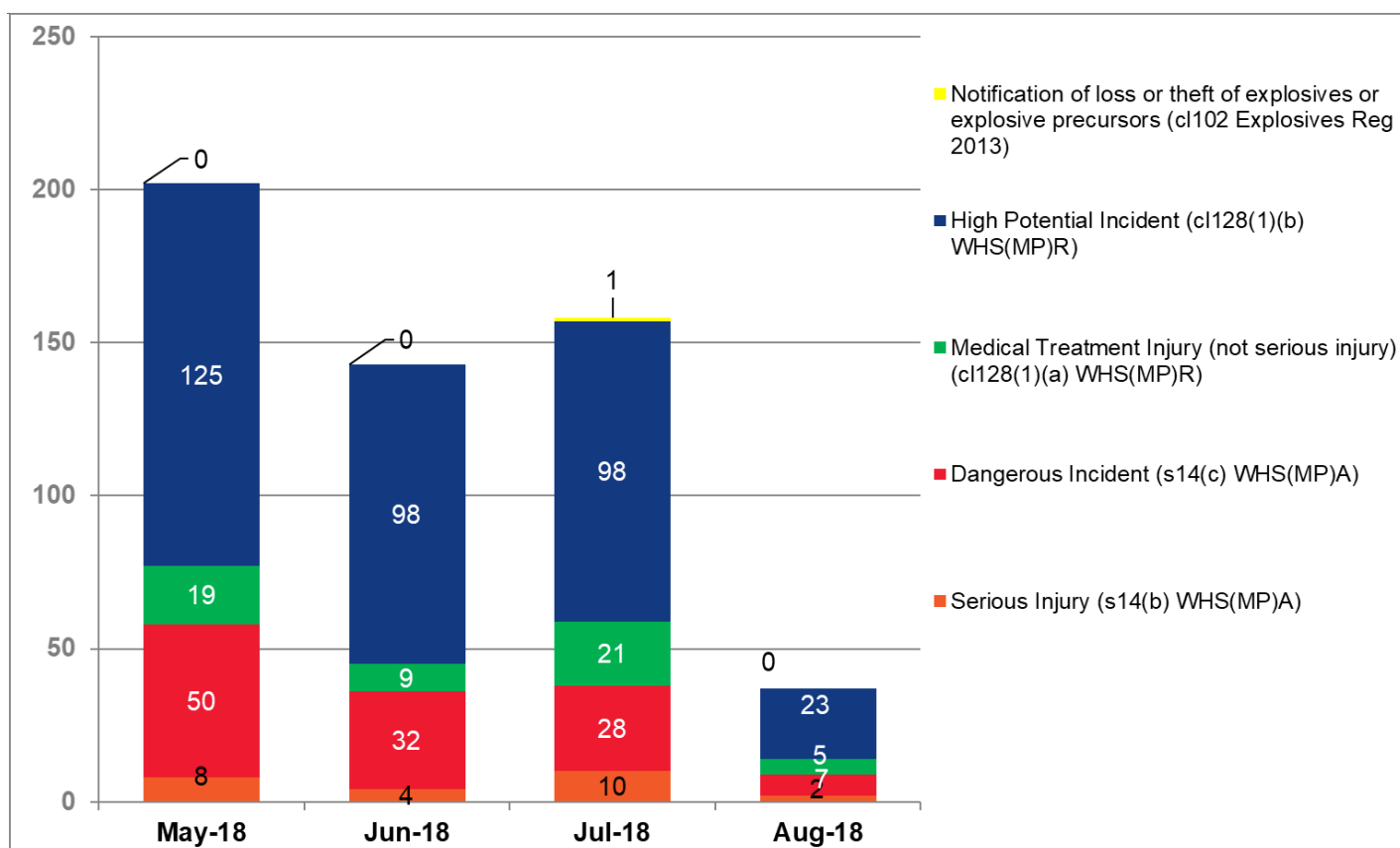
Mines must have systems in place to manage the security of explosives during periods of storage, preparation and use.

Explosives Regulation 2013 (clause 102) requires the notification for loss, theft or attempted theft of explosives or explosive precursors.

Dangerous incident  
SinNot-2018/01205

A seismic event reading 2.9 on the Richter scale impacted on an underground metalliferous mine. All workers retreated to refuge chambers and were evacuated to the surface once geotechnical inspections confirmed egress could occur safely. This was in accordance with the site procedures.

Mines must identify all foreseeable scenarios when developing their emergency management plans. A determination of seismic risk should be completed during the development or review of the plan.



Publication	Issue / Topic
DNRME Qld in MinEx	<ul style="list-style-type: none"> <li>A worker was cutting steel that was sticking out of a waste steel container, when the container suddenly caught fire. No one had checked the bin for flammable material before commencing the task. <a href="#">Details</a></li> </ul>
DNRME Qld in MinEx	<ul style="list-style-type: none"> <li>This safety alert has been issued following an increase in reported unplanned movement / loss of control incidents involving rubber tyred vehicles. Of particular concern is the increasing number of vehicles contacting centre dividers or safety berms and then rolling. <a href="#">Details</a></li> </ul>
WA Mines Dept.	<ul style="list-style-type: none"> <li>Safety considerations when switching to flammable refrigerants The Department of Mines, Industry Regulation and Safety has become concerned following incidents involving flammable refrigerants. These have resulted in injury and damage to property within Western Australia and a fatality in New Zealand. <a href="#">Details</a></li> </ul>
WA Mines Dept.	<ul style="list-style-type: none"> <li>Alert over falsified high risk licences WorkSafe WA Commissioner and Deputy Director General Safety Regulation Group, Ian Munns said the department had recently been alerted to a licence that had been altered to include classes of high risk work for which the licence holder had not been trained. <a href="#">More information.</a></li> </ul>

**Note:** While the majority of incidents are reported and recorded within a week of the event, some are notified outside this time period. The incidents in this report therefore have not necessarily occurred in a one week period. All newly recorded incidents, whatever the incident date, are reviewed by the Chief Inspector and senior staff each week. For more comprehensive statistical data refer to our annual performance measures reports.

### Disclaimer

The information contained in this publication is based on knowledge and understanding at the time of writing. However, because of advances in knowledge, users are reminded of the need to ensure that information on which they rely is up to date and to check the currency of the information with the appropriate officer of NSW Department of Planning and Environment or the user's independent advisor.

### Office use only

CM9 reference	DOC18/563245
Mine safety reference	ISR 18-30
Date published	10 August 2018