

# FACT SHEET

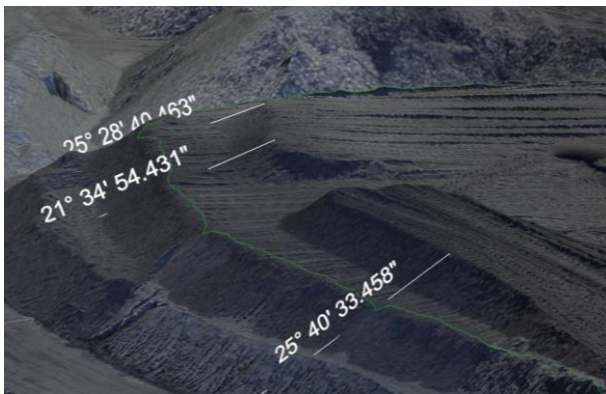
## Planned Inspection Program - Ground or strata failure - stockpile stability Surface coal operations

August 2021



The principal hazard of ground or strata failure can occur through various mechanisms at surface mining operations and therefore potentially place workers at risk, if not controlled effectively. The management of stockpile stability is a key mechanism within this process and should be assessed both individually and cumulatively with other hazards.

We are commencing a program of planned inspections and targeted assessments at coal operations focussing on the critical controls associated with stockpile stability.



## Stockpile construction

Stockpiles are constructed to a design.



## Stockpile monitoring

Early warning signs of stockpile instability are detected, and action taken to keep people safe.



## Stockpile operating procedures

Stockpiles remain stable during operation.



## Stockpile dozer operator protection

Stockpile dozer operators are protected from engulfment risks.

## Considerations

Mine operators should consider the above criteria, as a minimum, and ensure that such information is included within their respective principal hazard management plans and associated documentation. Following investigations into strata failure incidents within the mining industry, it is evident that non-compliance with these key control measures have contributed to incident outcomes, which has caused both severe and fatal injuries to workers. When identifying and implementing control measures, mines operators are also reminded to follow the hierarchy of controls to ensure health and safety risks are minimised, so far as is reasonably practicable.

**Other relevant safety alerts and bulletins published by the Regulator:**

DATE PUBLISHED	REFERENCE	TITLE
Aug 2019	SB19-09	<a href="#">Lack of bunding on accessible edges</a>
Mar 2019	SB19-01	<a href="#">Rise in dozer incidents putting operators at risk</a>
July 2018	SB18-11	<a href="#">Windrow management and demarcation</a>
Apr 2013	MDG 28	<a href="#">Safety requirements for coal stockpiles and reclaim tunnels</a>
Aug 2011	SA11-09	<a href="#">Stockpile dozer lodged in reclaim valve</a>
Jan 2011	SA11-03	<a href="#">Stockpile Collapses on Loader Driver</a>
Aug 2002	SA02-11	<a href="#">Sand face collapses on loader</a>

© State of New South Wales through Regional NSW 2021. You may copy, distribute, display, download and otherwise freely deal with this publication for any purpose, provided that you attribute Regional NSW as the owner. However, you must obtain permission if you wish to charge others for access to the publication (other than at cost); include the publication in advertising or a product for sale; modify the publication; or republish the publication on a website. You may freely link to the publication on a departmental website.

Disclaimer: The information contained in this publication is based on knowledge and understanding at the time of writing (August 2021) and may not be accurate, current or complete. The State of New South Wales (including Regional NSW), the author and the publisher take no responsibility, and will accept no liability, for the accuracy, currency, reliability or correctness of any information included in the document (including material provided by third parties). Readers should make their own inquiries and rely on their own advice when making decisions related to material contained in this publication.

DOC21/626893