

INCIDENT ALERT

LOCATION: QUARRY
ACTIVITY: MAINTENANCE & HOUSEKEEPING
SUB ACTIVITY: N/A

ALERT STATUS: Normal
DATE ISSUED: 23/02/2021 20:21:41
INCIDENT No: 03587

TITLE

Operator injures foot while replacing the cutting edge on loading shovel bucket

COUNTRY OF ORIGIN

ACCIDENT / INCIDENT DETAILS

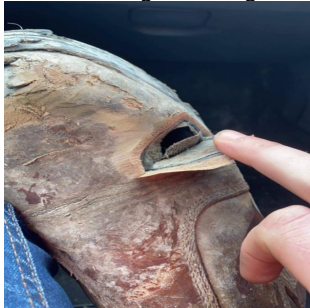
A trained operative was changing a cutting edge on a loading shovel bucket. The old edge had been removed and the base edge cleaned with a scraper (as per safe operating practice).

Before fitting the new edge, the operative noticed some dirt remaining on the base edge and raised his foot to rub it off. The base edge was worn sharp like a razor and sliced through his safety boot, above the steel toecap and sliced the operative's foot.

The operative required a trip to A&E and the wound required stitching. This resulted in a LOST TIME INJURY (LTI) as the operative was required to rest his foot to ease pressure on the stitches.

ACCIDENT / INCIDENT IMAGES

Click image to enlarge



Damage to the boot above toe cap

Click image to enlarge



LEARNING POINTS / ACTIONS TAKEN

Once the old cutting edge is removed, be aware that the base edge of a worn bucket can be very sharp

NEVER run your hand or foot along the edge

ALWAYS use a scraper or brush to clean the underside of the bucket, prior to fitting the new cutting edge.

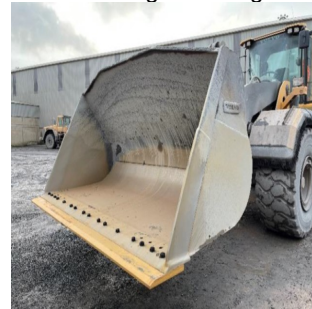
LEARNING POINTS / ACTIONS IMAGES

Click image to enlarge



Before - Bucket showing razor sharp edge

Click image to enlarge



After - Bucket with new edge fitted