

NZ Safety Alert

Let's work together to keep ourselves and our workers safe.

5 November 2021

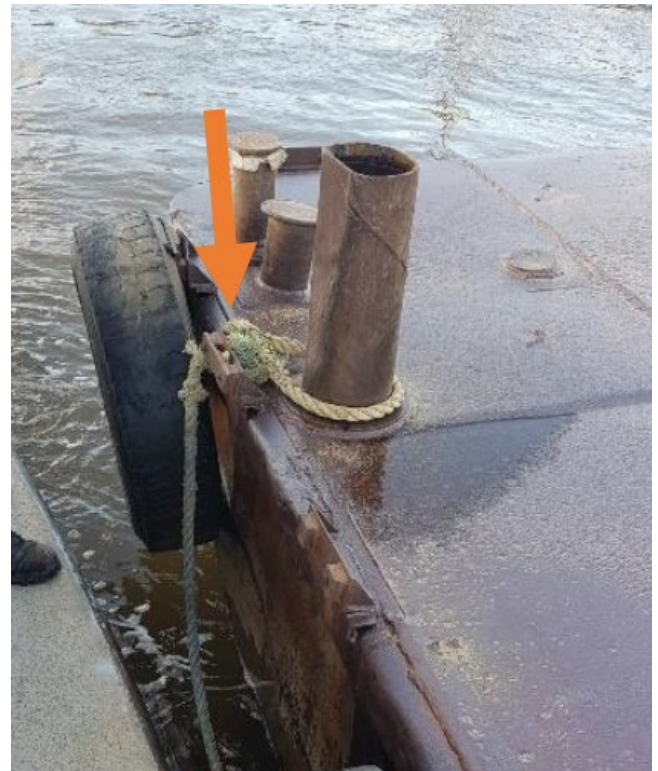
Worker falls from barge

A worker had moored a loaded barge at the wharf for unloading. As he began removing the ropes tethering the barge to the tug, he noticed that one of the ropes had snagged around an old tyre mount on the side of the barge.

While trying to dislodge the rope with his foot, the rope freed and the worker lost his balance, falling into the water.

The operator was wearing a lifejacket and was not fully submerged and managed to pull himself up the side, and back onto the barge.

The worker did not sustain any injuries.



MinEx data on incidents with the potential to cause harm over the 48 months to June 2021 show 16% of all incidents (644 incidents) result from falls, of which 288 involve fall of a person.

You need to ensure that:

1. There is a safe means of access and egress to all plant.
2. Controls are in place to ensure workers are protected from the hazard of drowning when working near water.
3. All equipment is fit for purpose and the means of securing plant does not create risks to workers.

Know of an incident or near miss? Please share the learnings with us.