

NZ Safety Alert

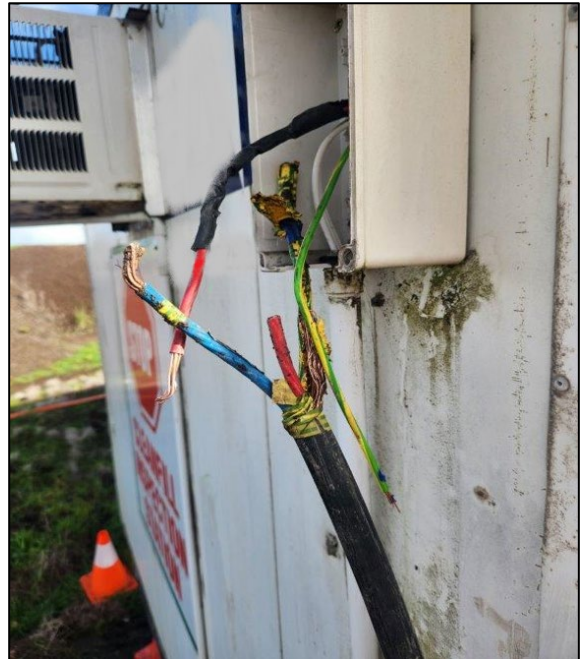
Let's work together to keep ourselves and our workers safe.

4 August 2023

Mobile plant damages electrical cable

A piece of quarry mobile plant was being used to move rocks to level an area of ground to establish a cleaning pad near a building.

While moving a rock, the rock caught an electrical cable that was just below the surface of the ground, pulling the cable out of an electrical junction box.



[MinEx data](#) on incidents with the potential to cause harm over the past 5 years show 5% of incidents (267 incidents) result from release of pressure, of which 97 involved electricity.

You need to ensure that:

1. Before excavating on site for any purpose, identify where services are located underground (e.g. use "[Dial-before-u-dig](#)").
2. Underground services are clearly marked and/or signposted.
3. You conduct a risk assessment for all new, irregular or uncommon tasks to identify hazards and implement appropriate controls.

Know of an incident or near miss? Please share the learnings with us.