

SHEQ ALERT

Reference number:	006/2021	Date: 07/05/2021
Title:	Roller Emergency Stop Brake Failure	

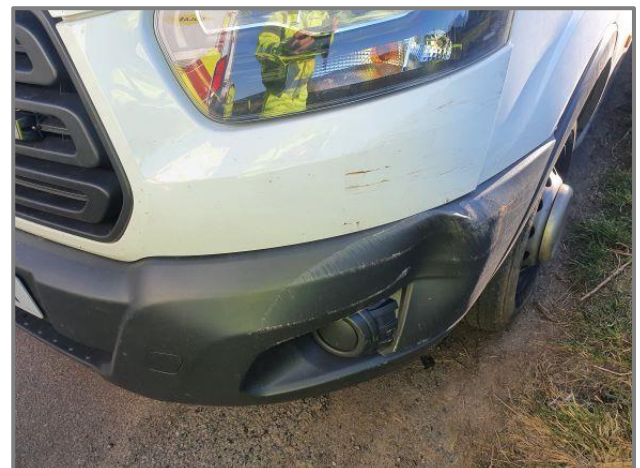
An investigation is ongoing to establish the root causation of a brake failure on a 10 tonne Hamm Roller HD 90i.

The roller was being used on an incline and the operator had already raised a defect regarding a fault in the forward/reverse control lever, stating the roller was still creeping when in neutral.

Clee Hill attended site and after greasing the lever said the roller was fit for use. Soon afterwards as the operator attempted to stop on the side of the road the roller started to roll backwards uncontrollably.

In an attempt to stop it he pushed the emergency stop button which caused the engine to cut out as intended but the brakes failed to stop the roller and it clipped a Colas vehicle before coming to a stop approximately 80 metres down the road.

The engineer who later inspected the roller stated the brake mechanisms had completely failed though the hydraulic system was intact and working.



SHEQ ALERT

Learning Outcomes

At this point we have not fully established the root cause of the failure and are seeking expert advice however, to ensure we operate this type of equipment safely the following information should act as a guide:

- All equipment, hired or otherwise must have up to date inspection and maintenance records
- Pre-use checks must be carried out by all plant operators prior to start of shift, this must be documented, recorded and available
- Where applicable, brake functionality must be checked as part of the pre-use checks. Where required the manufacturer or hire partner must provide guidance on how to achieve this safely without compromising the integrity of the item or the safety of others
- Where an emergency stop function exists this should be checked in accordance with the manufacturers or hire partners guidance
- Other than the above, only use emergency stop for real emergencies
- When parking items of plant on inclines ensure they are chocked or parked in a manner that they cannot roll