

# NZ Safety Alert

Let's work together to keep ourselves and our workers safe.

23 June 2023

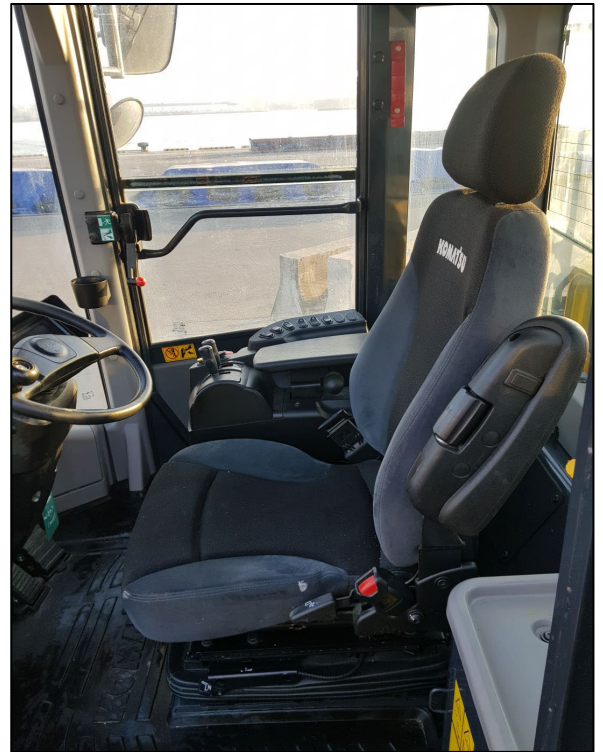
## Injury from loader seat

The operator of a front-end loader had complained about the loader not being comfortable to operate on several occasions.

Suffering from a sore back, the worker called in sick and went to a doctor. He had sustained a lumbar sprain from operating the loader resulting in him being unfit for work for two weeks.

The worker's manager had offered to swap him out to give his back a rest on several occasions, but the worker had declined.

Alternate duties were provided while the worker completed physio.



[MinEx data](#) on incidents with the potential to cause harm over the past 5 years show 15% (842) of all incidents result in an occupational injury.

### You need to ensure that:

1. Seats in mobile equipment provide good riding comfort, durability and support the driver in frequent tasks, such as getting in and out of the vehicle.
2. Mobile equipment is maintained in accordance with Original Equipment Manufacturer (OEM) requirements, including seats.
3. Workers immediately report any discomfort when operating mobile equipment.

**Know of an incident or near miss? Please share the learnings with us.**