

NZ Safety Alert

Let's work together to keep ourselves and our workers safe.

22 September 2023

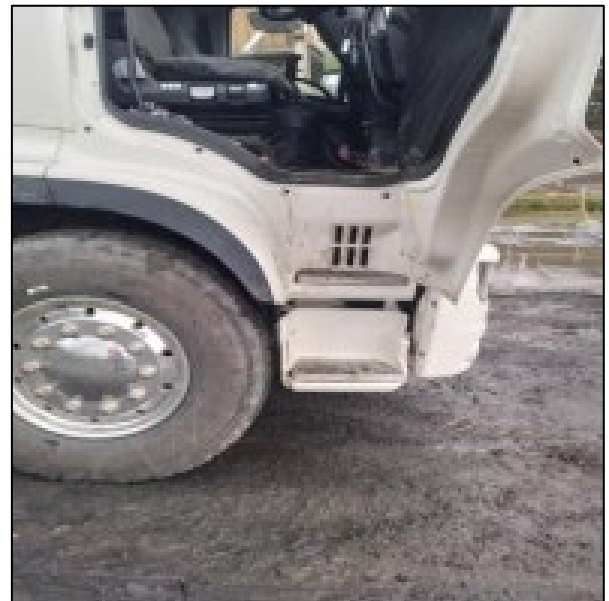
Driver slips entering truck

A concrete truck was delivering concrete to a quarry for site maintenance. The driver had parked close to a site fence constricting the opening of the driver's side door.

As the driver climbed into the truck, from the bottom step, his foot slipped downwards along the step towards the door and he returned abruptly to the ground.

The following day the driver reported a sore back and his leg felt weird. He said he'd woken up with the soreness.

The driver was diagnosed with a lumbar sprain and received physio and acupuncture treatment.



[MinEx data](#) on incidents with the potential to cause harm over the past 5 years show 16% of incidents (963 incidents) result from fall, of which 368 involved fall of a person.

You need to ensure that:

1. Plant operators maintain three points of contact when entering and exiting the cabins of mobile equipment.
2. Safety boots are securely fastened, either laced up or zipped up.
3. Good housekeeping ensures work areas are free from obstructions to prevent slips, trips and falls.
4. Workers are made aware of the hazards when entering and exiting the cabins of mobile equipment.

Know of an incident or near miss? Please share the learnings with us.