

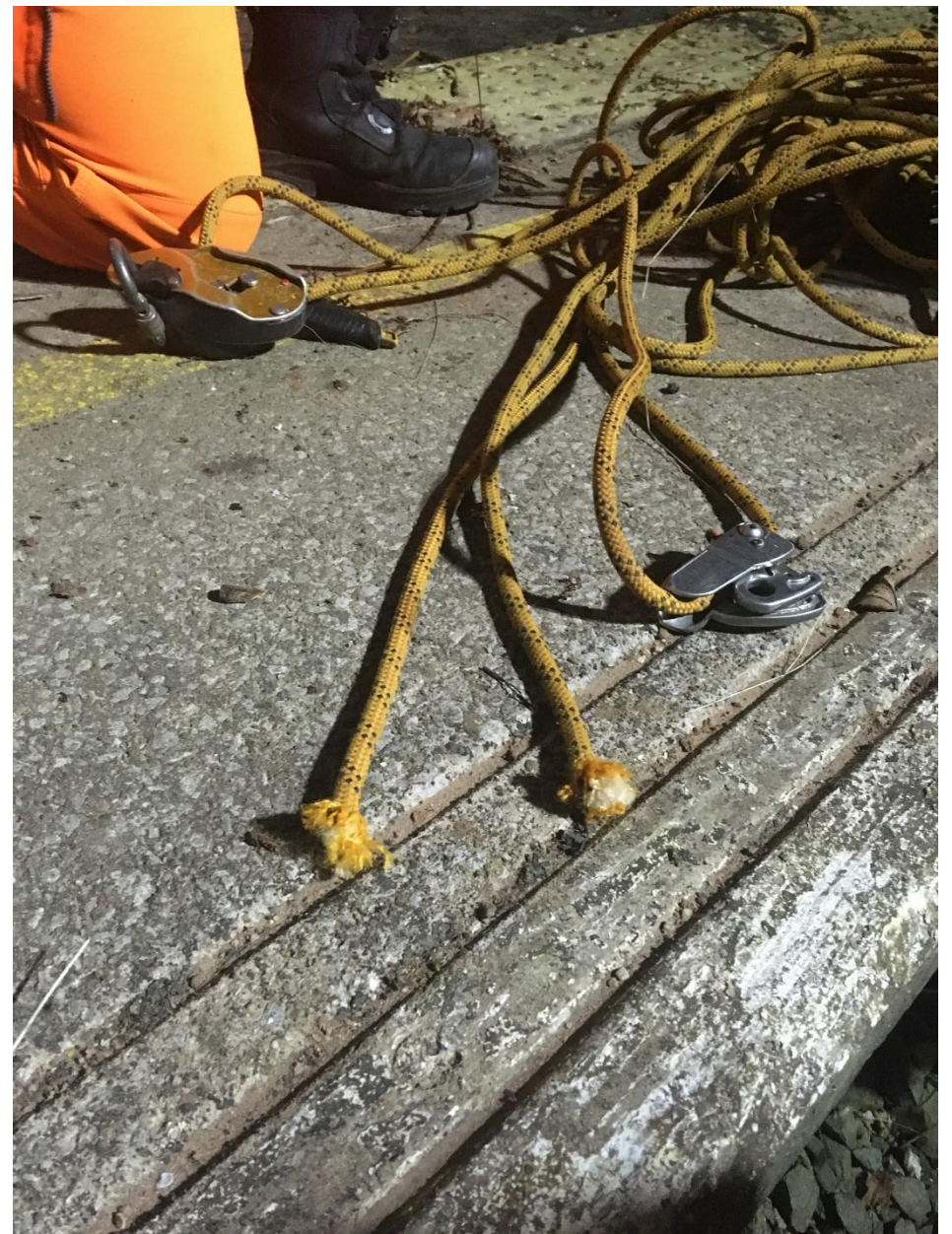
**CONTROL OUR WORK AREAS****RIDDOR Reportable - Contractor injured in Fall From Height**

On the 26th March 2020 at approx. 02:00hrs, a rope access sub-contractor working on behalf of JMS was injured when they fell from height.

Rope Access technicians were working on a embankment rock face carrying out planned de-veg and de-scaling activities, when another technician, from the same company, carrying out hedge trimming above the embankment, cut through both the working line and safety line of the technician. This resulted in the Rope Access technician falling approx. 8 – 10 feet to the ground.

Initially the contractor felt fine and was walking but was advised to go to the hospital by JMS staff. On examination, the technician was found to have sustained a fracture to the spine.

An internal investigation is ongoing and findings will be released on it's conclusion.

**ACTION TAKEN AND/OR REQUIRED:**

1. All site carrying out rope access activities must review the SSOWs and confirm all relevant controls are in place with the Level 3 Supervisor. Site Managers to notify their respective Project Managers that this has taken place.
2. Ensure exclusion zones are briefed and that all site staff are aware of how they are demarcated.

Share with your teams and ensure this is briefed out, including contractors.

