



Safety Alert

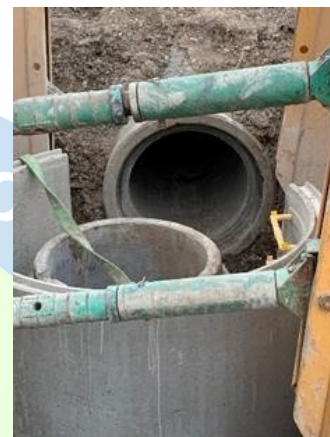
Accident during drainage works

Overview

On the evening of the 27th March 2020 a member of the R&W Supply-chain was injured whilst installing a section of concrete pipe to terminate a drain run within a manhole.

The gang were placing the 750mm diameter concrete stub pipe using a 13t excavator to lift and place the pipe, the sling slipped, causing the stub pipe to spring out of the female end of the main pipe, rocking the stub back onto the spigot of the pipe and into the manhole where the operative was stood, forcing him against the inside of the manhole ring, hitting him on the stomach and right hand.

The operative sustained bruised lungs, an undisplaced T3 spinous process fracture and a minor injury to his right hand. The operative was taken to hospital to be assessed and was discharged the following day.



This incident had the potential to cause serious life changing injuries.

The investigation found that the lifting operation had failed because the pipe had been slung incorrectly, lifting the concrete stub pipe with only one sling. This was not in accordance with the agreed safe system of work as two slings should have been used. Additionally, the injured operative had been working within the exclusion zone of the excavator, both of these key findings could and should have been prevented by any member of this experienced 3-man team.

The incident occurred as a result of the operative's behaviours, ultimately, they chose production over following the safe system of work.

Discussion Points

- Are members from your supply-chain being inducted effectively?
- How do you include your short-term supply-chain into your company's established safety culture?
- Does your behavioural safety programme include your supply-chain?
- Are you effectively monitoring your supply chains safety performance?
- Are you using the most suitable lifting attachments for your works?
- Are exclusion zones in place and are all site personnel aware of them?
- How are you ensuring the information from the safe system of work is understood?
- Are all site personnel aware of the accident/incident reporting process?
- Remind everyone that if it's not right or feels unsafe to STOP, THINK and reassess before continuing.

People Plant Interface

**DO YOU KNOW
YOUR SAFE ZONES?**

360 Tracked Excavator

