

Safety Alert

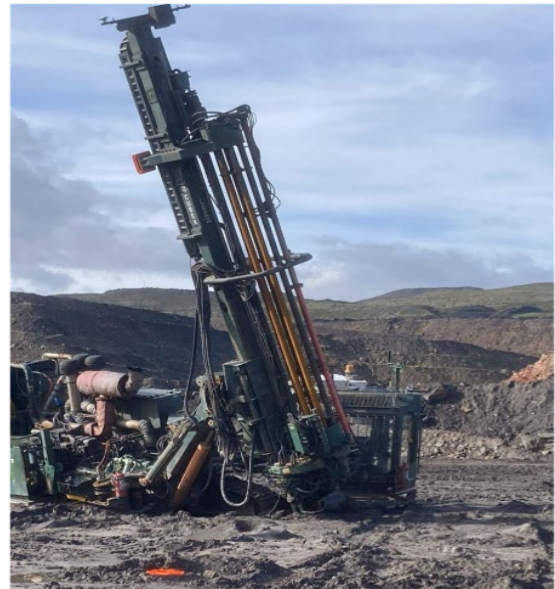
1 May 2026

Let's work together to keep ourselves and our workers safe.

Uncontrolled movement of drill rig

A drill rig was completing the final blast holes on the edge of a drill pattern. The equipment was operating on ground previously broken during blasting.

While preparing to initiate the next blast hole, subsidence occurred beneath the drill, resulting in the right-hand-side track sinking into the affected ground. In response, the operator deployed the mast to stabilise the drill and prevent further movement, leaving the machine supported by both the mast and the rear chassis structure.



[MinEx statistics](#) on incidents with the potential to cause harm over the past 8 years show 29% of incidents (2,081 incidents) involved vehicles of which 1,025 resulted from loss of control of a vehicle.

You need to ensure that:

1. The ground is checked prior to drilling, taking into account of geology, historical mining activity, and surface operations.
2. Mobile plant operators are trained and assessed as competent to operate plant, including responding to uncontrolled movement of plant.
3. Exclusion zones are established around drilling and blasting to ensure no one is in the zone of a drill rig.

Know of an incident or near miss? Please share the learnings with us.