

NZ Safety Alert

31 May 2024

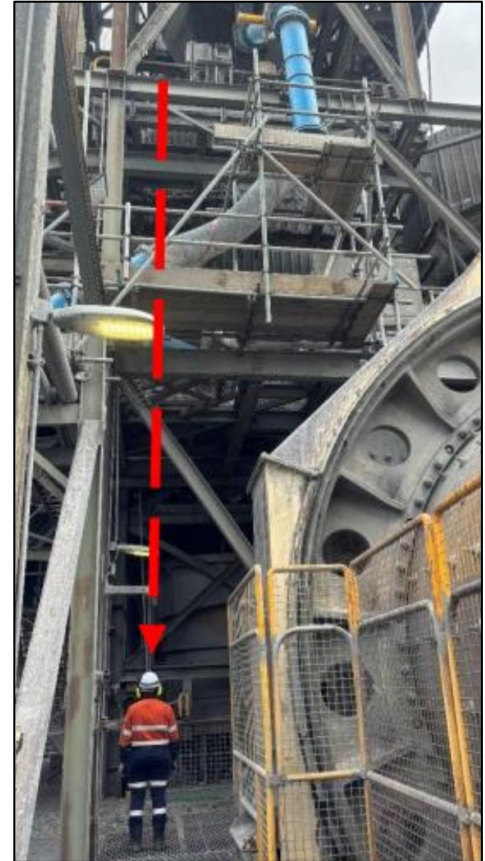
Let's work together to keep ourselves and our workers safe.

Falling object hits worker

During plant maintenance shutdown, work was being undertaken on multiple levels of the plant when a piece of wood weighing 1.7kg fell 9.3 metres from a purpose-built scaffold platform, striking a worker on the head and shoulder as he walked below.

The worker was wearing their hard hat and that took most of the impact whilst protecting his head from the fallen object.

The worker was assessed by emergency response first aiders on site and was deemed fit to continue work.



[MinEx data](#) on incidents with the potential to cause harm over the past 5 years show 16% of incidents (995 incidents) result from falls, of which 379 result from fall of plant or equipment.

You need to ensure that:

1. Regular workplace inspections are conducted to ensure work areas are cleared of trip hazards, dunnage, waste etc.
2. No one has access to areas under where others are conducting maintenance unless appropriate controls are in place.
3. Hazards associated with simultaneous operations are identified and adequate controls are put in place particularly on maintenance days.

Know of an incident or near miss? Please share the learnings with us.