



MinEx Health and Safety Statistics Q2 2019 – April to June

MinEx Safety Statistics – Q2 2019

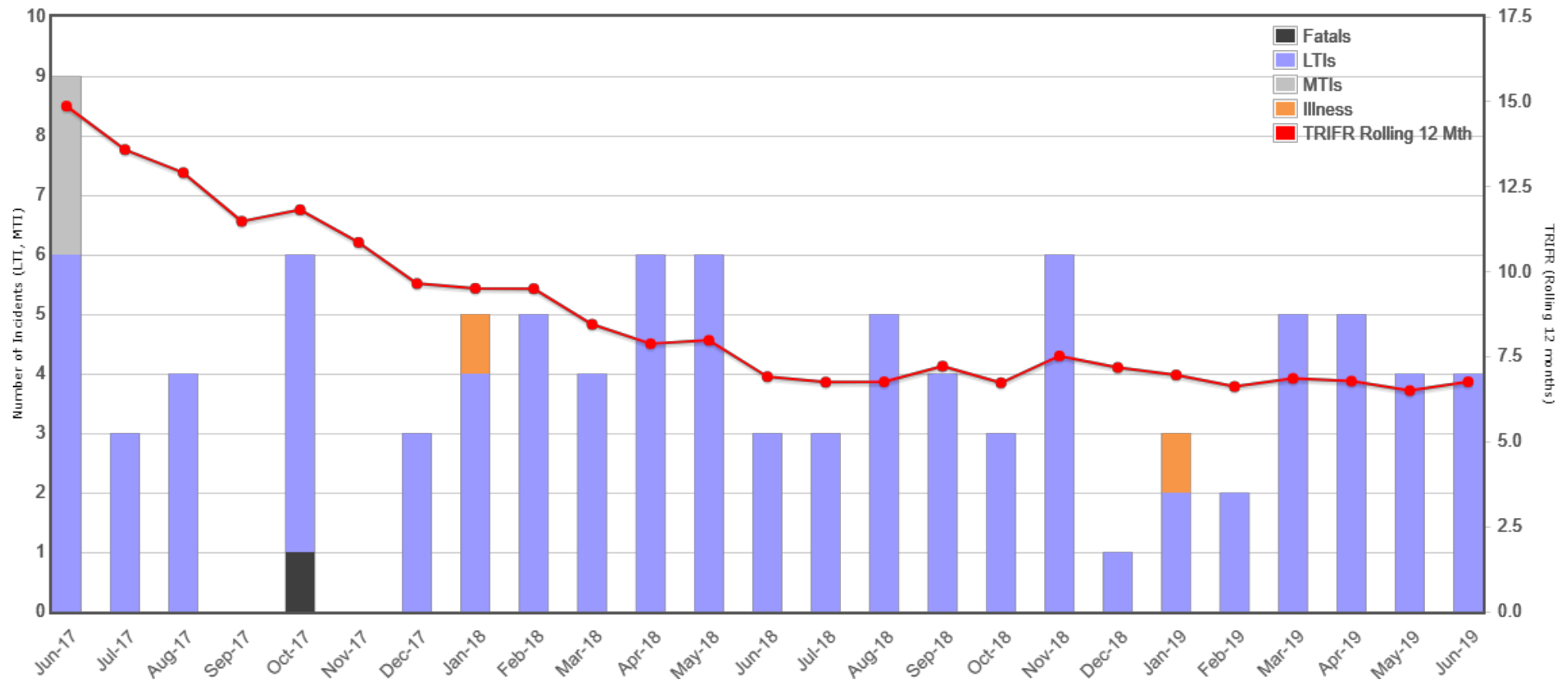
Definitions

Fatality	A fatality is a death resulting from an incident of hazardous exposure involving work, regardless of the time intervening between injury and death.
Serious accident	A serious accident is an incident which results in admittance to hospital for treatment.
Occupational illness	An occupational illness is any work-related abnormal condition or disorder, other than one resulting from a work injury, caused by or mainly caused by exposures at work which results in an adverse reaction within a body system.
Incident with potential for harm	An incident that, under different circumstances, might easily have resulted in a serious injury, fatality or catastrophic loss.
Lost Time Injury (LTI)	Lost time injury or occupational illness resulting in an inability to work on the next rostered day or shift subsequent to the injury occurring.
Medical Treatment (MTI)	A work-related injury or occupational illness that is not an LTI and which results in injury or illness that requires medical treatment at a higher level than first aid, generally from a doctor or a related professional such as a physiotherapist.
Hours worked	The total number of hours worked including overtime and training but excluding leave, sickness and other absences. Used to calculate incident rate.
Falls	Includes: <ul style="list-style-type: none"> • Fall of ground (rock fall, stockpile collapse, ground movement) • Fall of equipment (tool, plant, other object) • Fall of person (slips, trips, falls, bumps)
Collision	Includes: <ul style="list-style-type: none"> • Vehicle collision • Loss of control of a vehicle (any incident involving vehicle other than collision) • Person hit by a vehicle
Entanglement	Includes: <ul style="list-style-type: none"> • Person caught/injured in plant (conveyors, drive belts, crush injury) • Injuries from plant (laceration, pinched finger)
Release of pressure	Includes: <ul style="list-style-type: none"> • Uncontrolled electrical incident (isolation breach, electric shock) • Uncontrolled hydraulic pressure event • Uncontrolled explosive event (misfire, blast-related issue)
Environmental	Includes ventilation, gas, dust, noise
Hazardous substances	Worker exposure to hazardous substances
Occupational injuries	Minor injuries from work activity including cuts, bruises, sprains etc.



MinEx Safety Statistics – Q2 2019

TRIFR data: All operations - June 2017 to June 2019

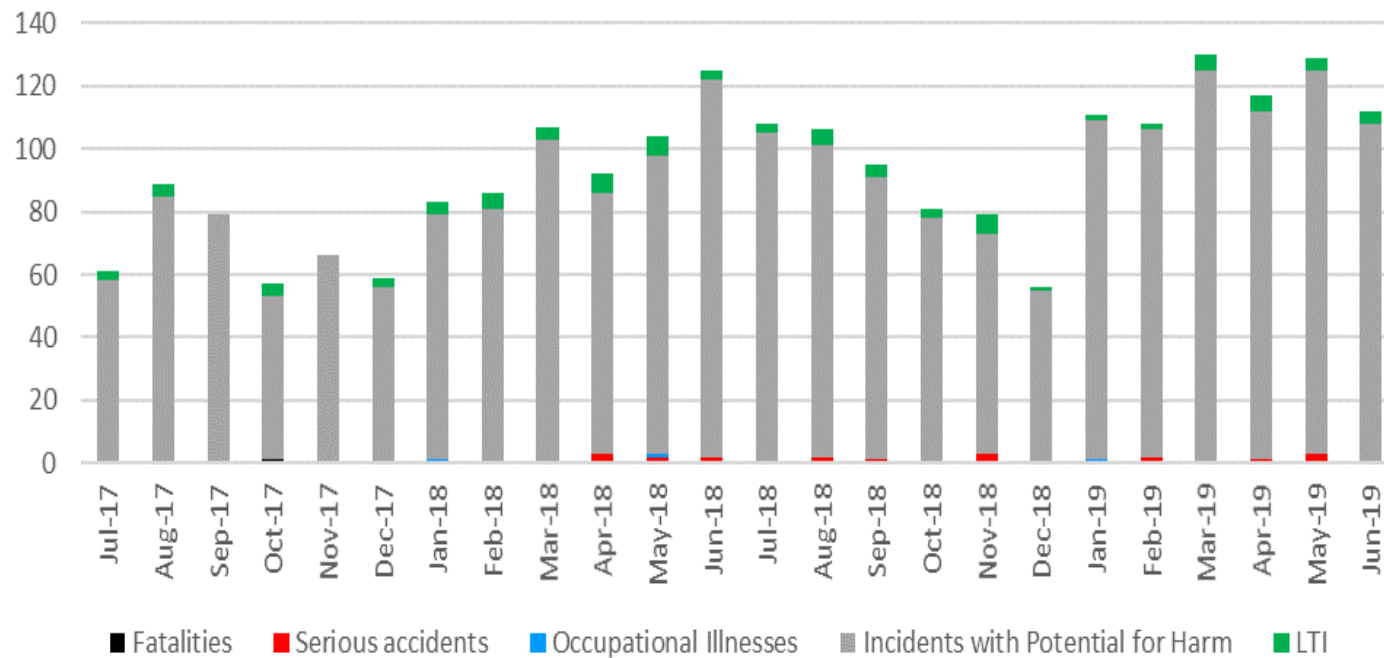


Note: No MTI data collected after June 2017

MinEx Safety Statistics – Q2 2019

High potential incidents: All operations – July 2017 to June 2019

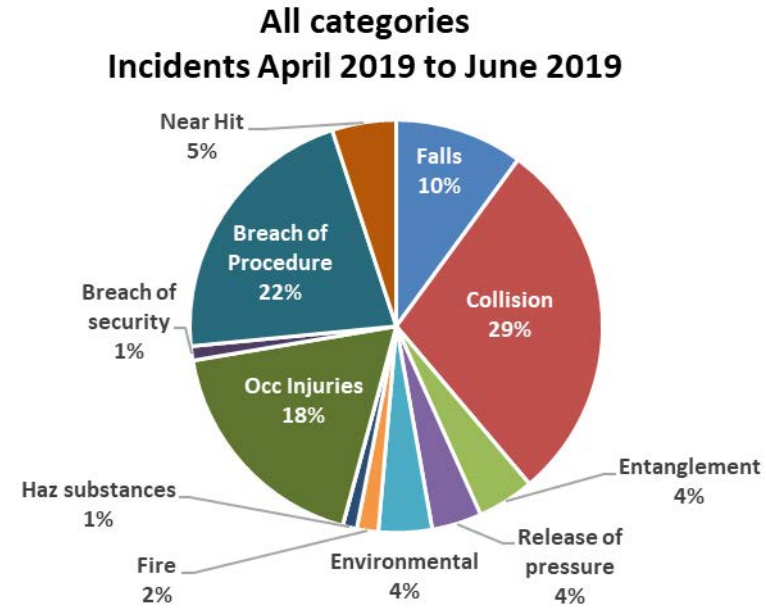
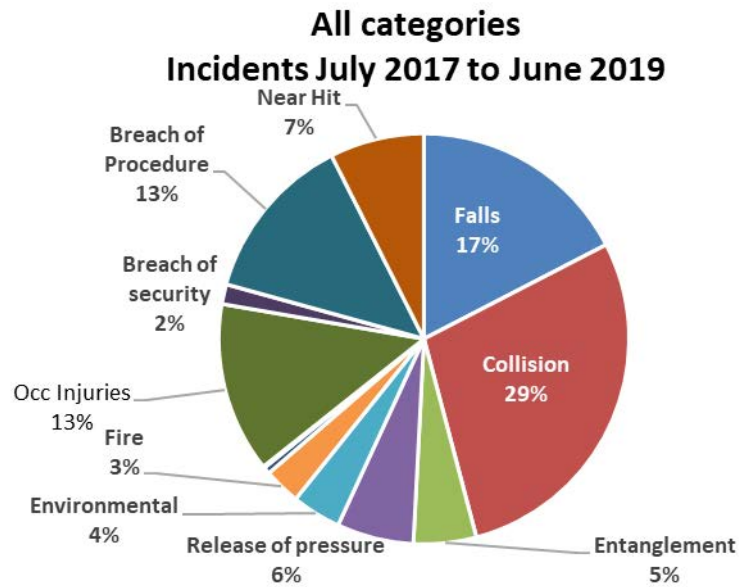
All Categories
Incidents July 2017 to June 2019



Note: No serious accidents collected before April 2018

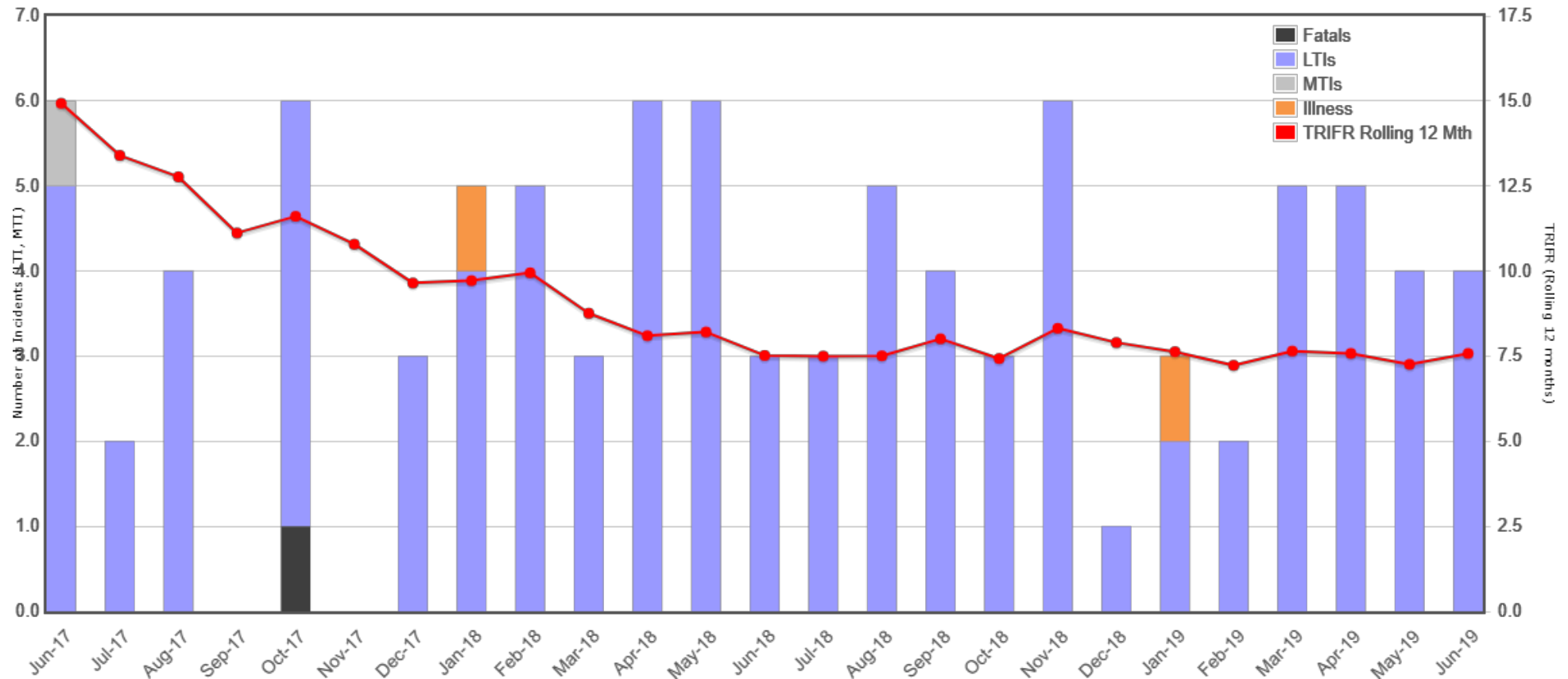
MinEx Safety Statistics – Q2 2019

Incident breakdown: All categories – incident breakdown



MinEx Safety Statistics – Q2 2019

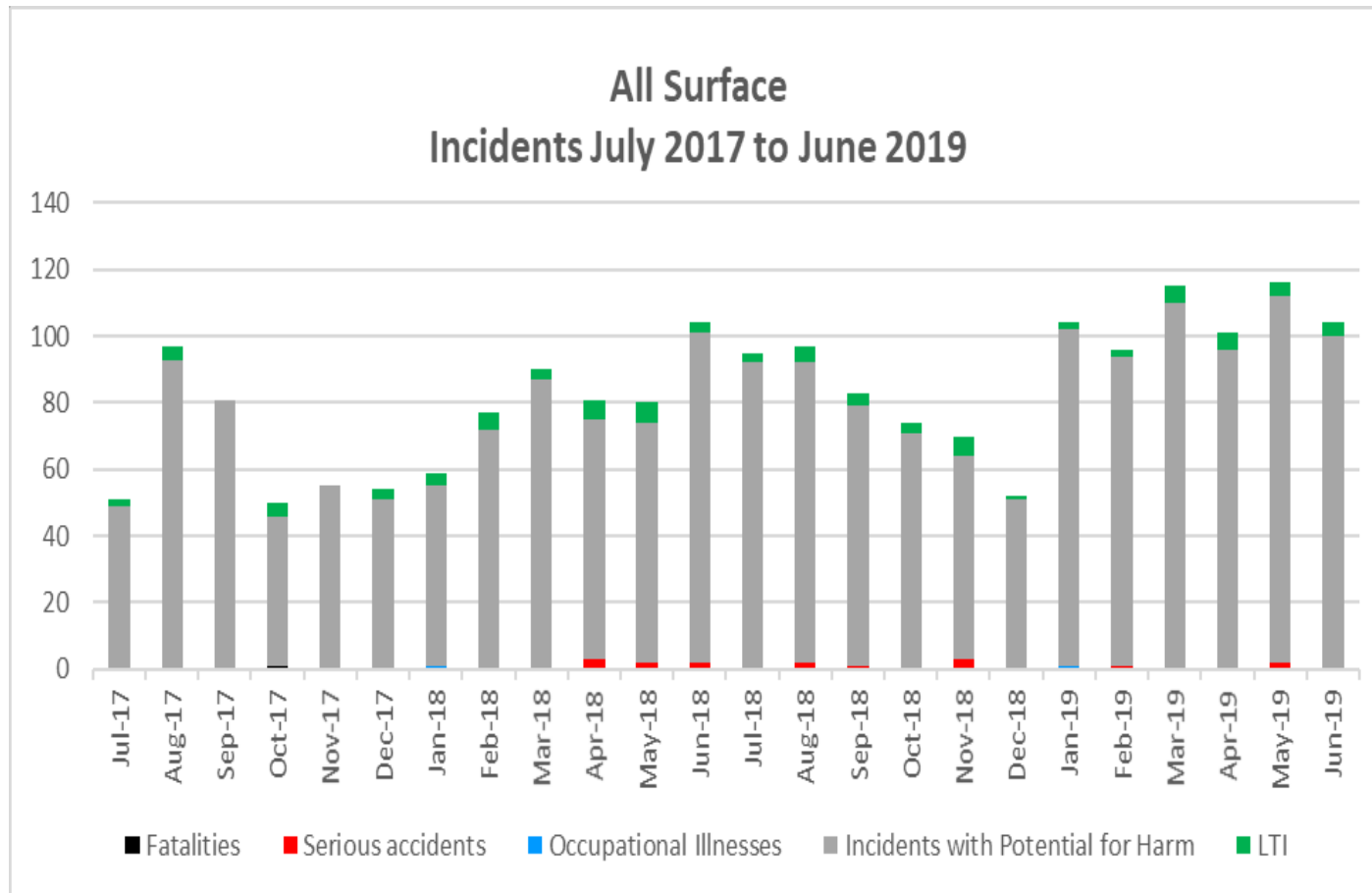
TRIFR data: All Surface – June 2017 to June 2019



Note: No MTI data collected after June 2017

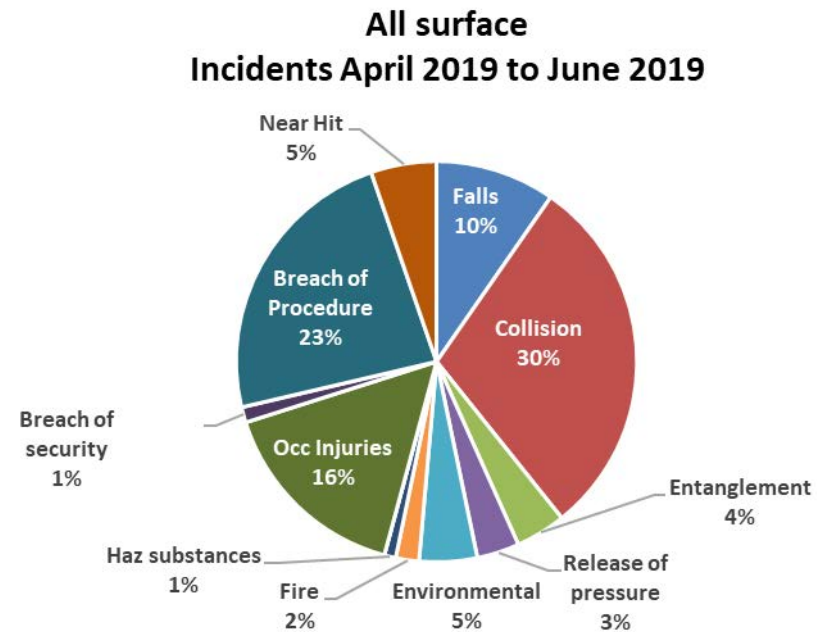
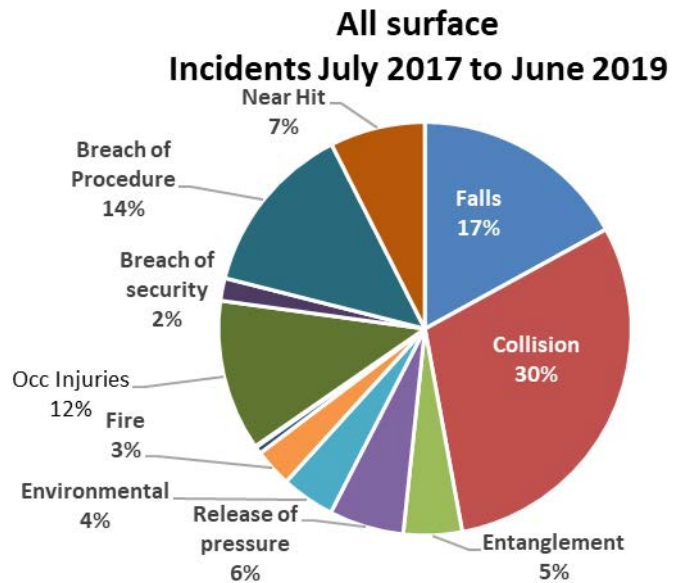
MinEx Safety Statistics – Q2 2019

High potential incidents: All Surface – July 2017 to June 2019



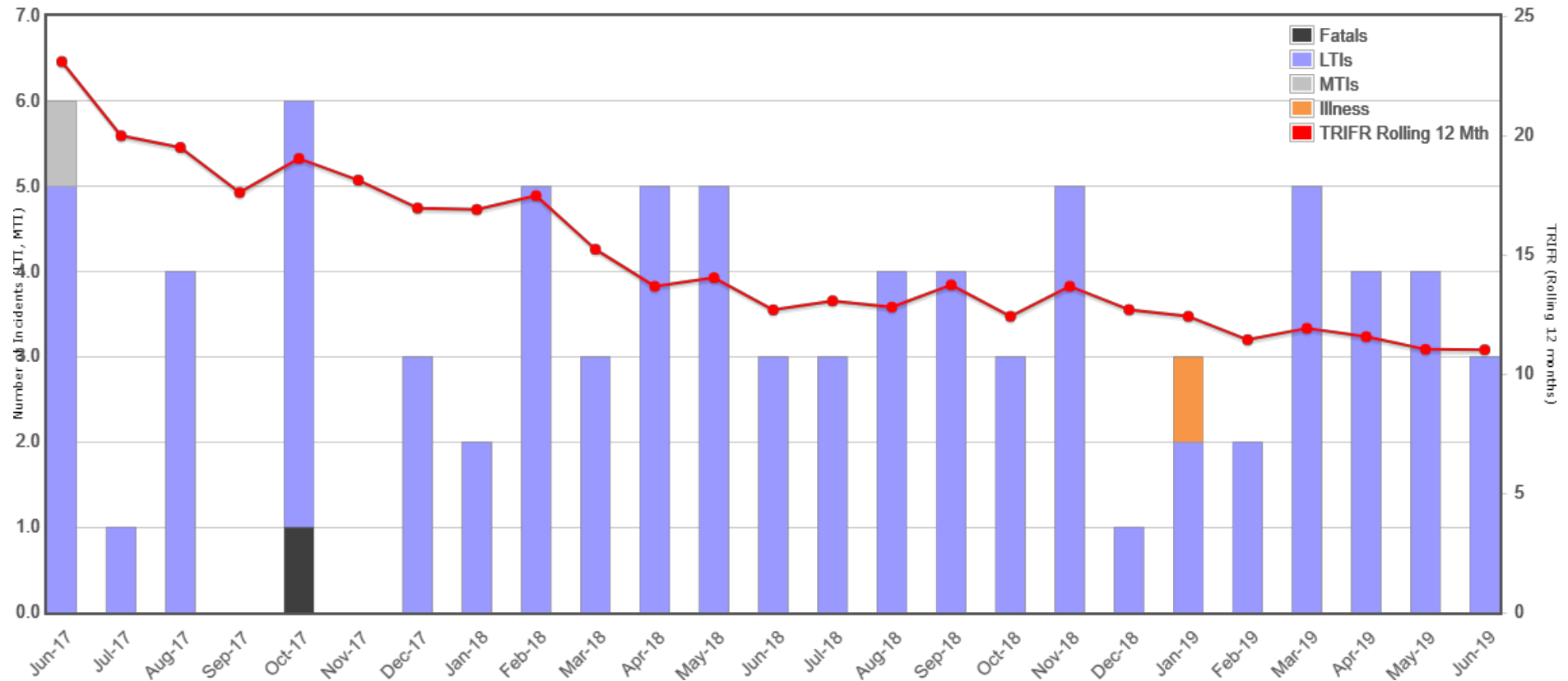
Note: No serious accidents collected before April 2018

Incident breakdown: All Surface



MinEx Safety Statistics – Q2 2019

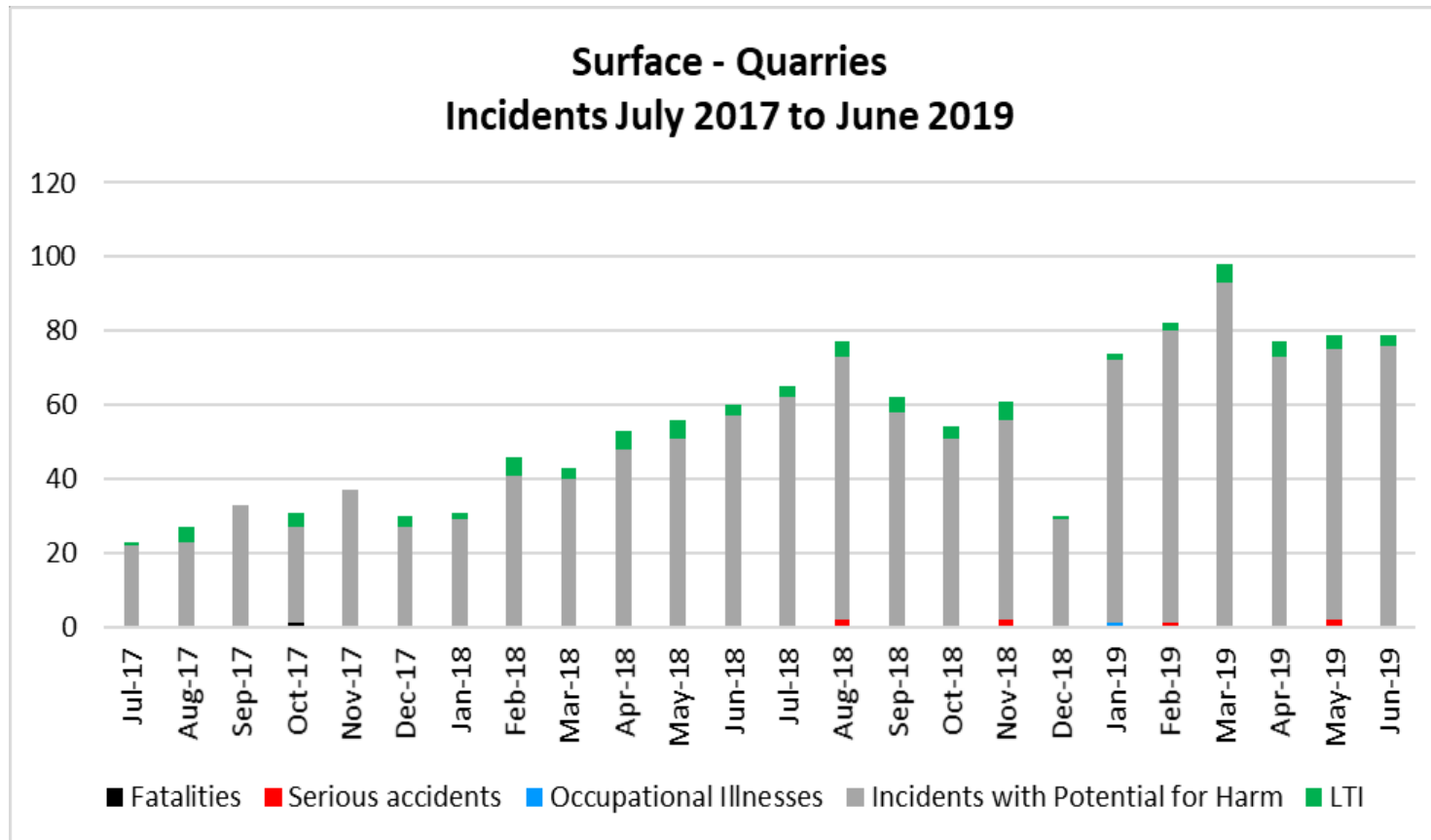
TRIFR data: Surface – Quarries, June 2017 to June 2019



Note: No MTI data collected after June 2017

MinEx Safety Statistics – Q2 2019

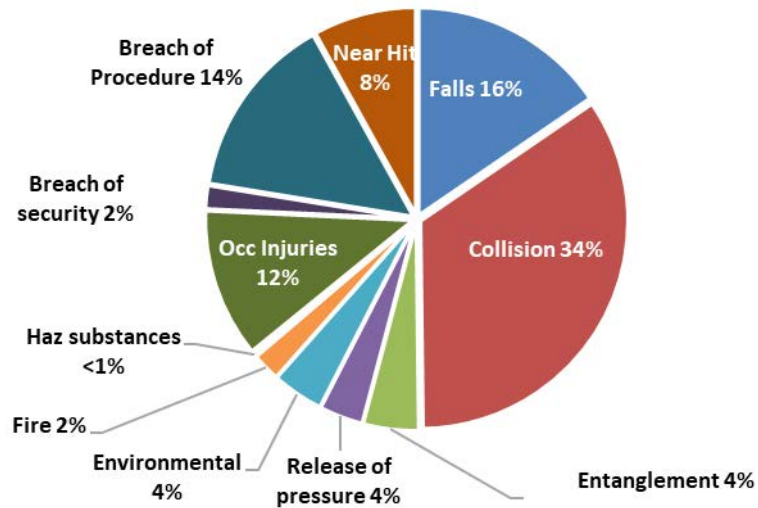
High potential incidents: Surface Quarries – July 2017 to June 2019



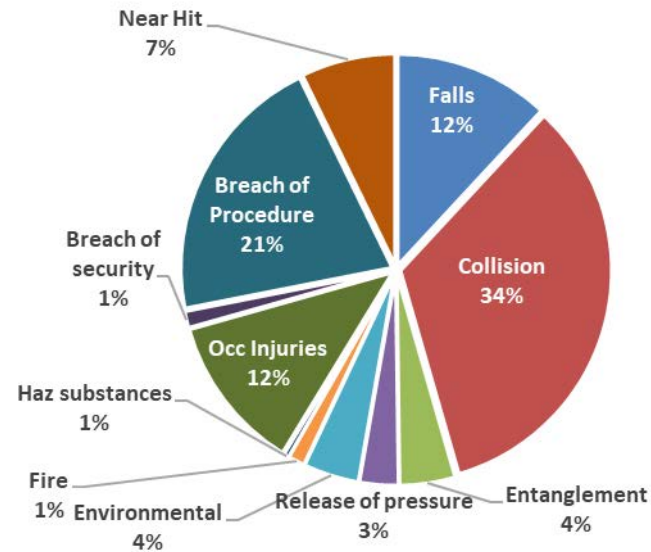
Note: No serious accidents collected before April 2018

Incident breakdown: Surface – Quarries incident breakdown

**Surface - Quarries
Incidents July 2017 to June 2019**

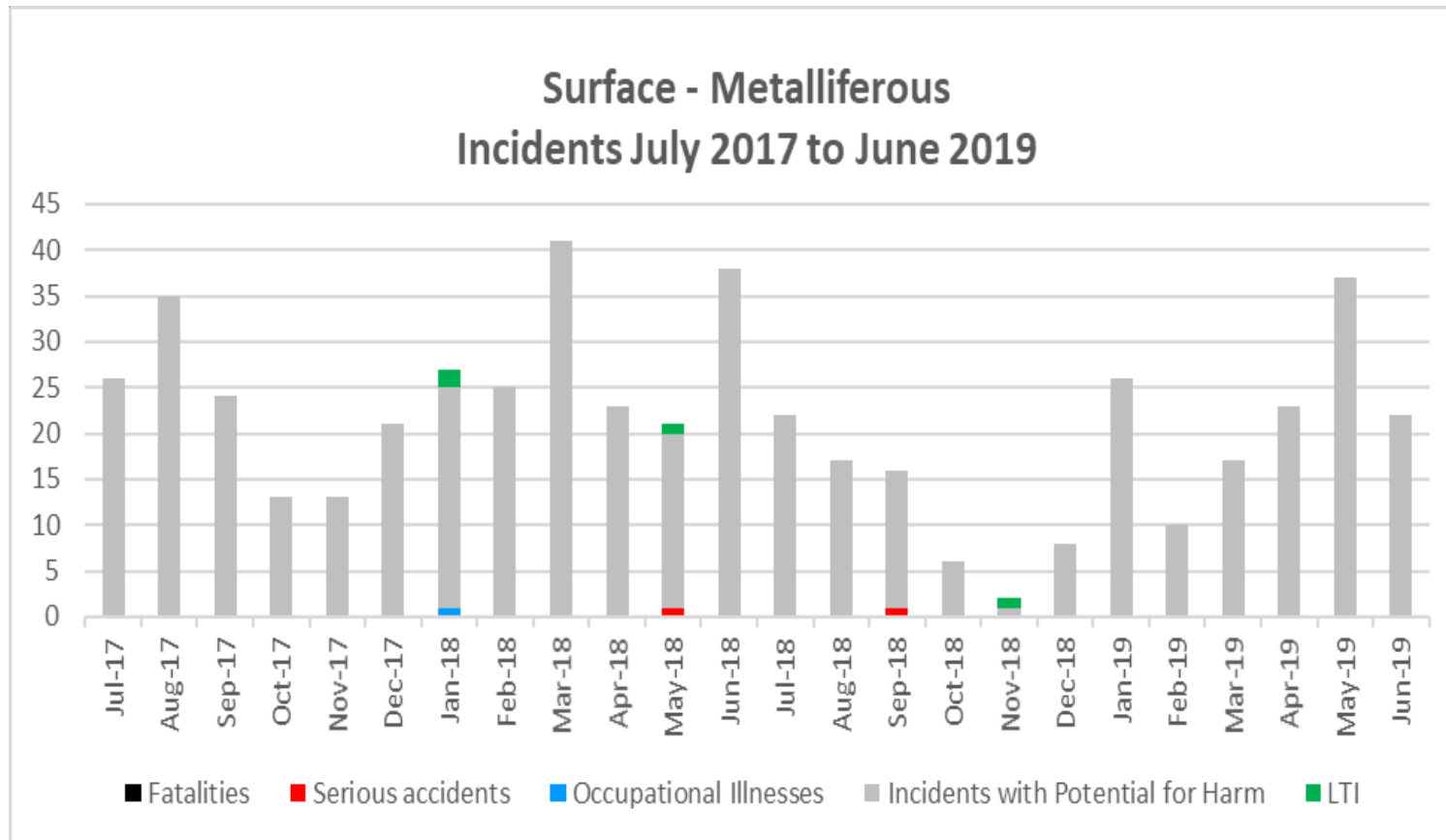


**Surface - Quarries
Incidents April 2019 to June 2019**



MinEx Safety Statistics – Q2 2019

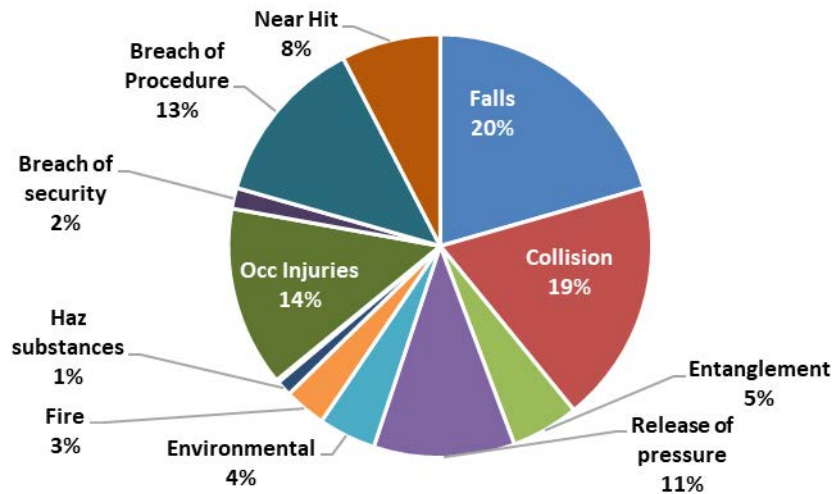
High potential incidents: Surface – Metalliferous, July 2017 to July 2019



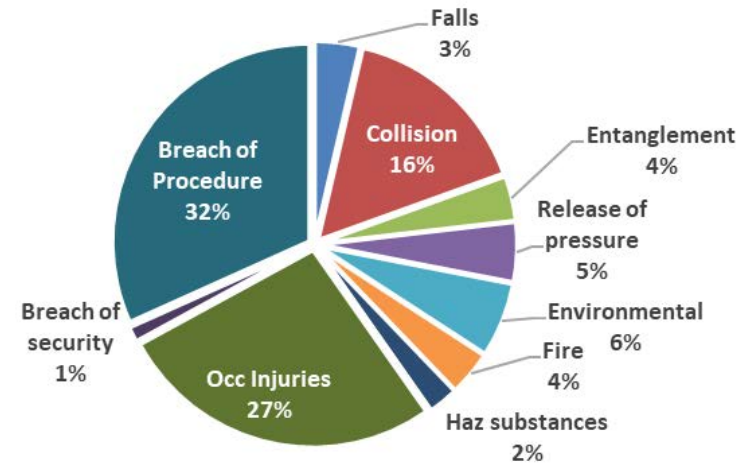
Note: No serious accidents collected before April 2018

Incident breakdown: Surface – Metalliferous incident breakdown

Surface - Metalliferous Incidents July 2017 to June 2019

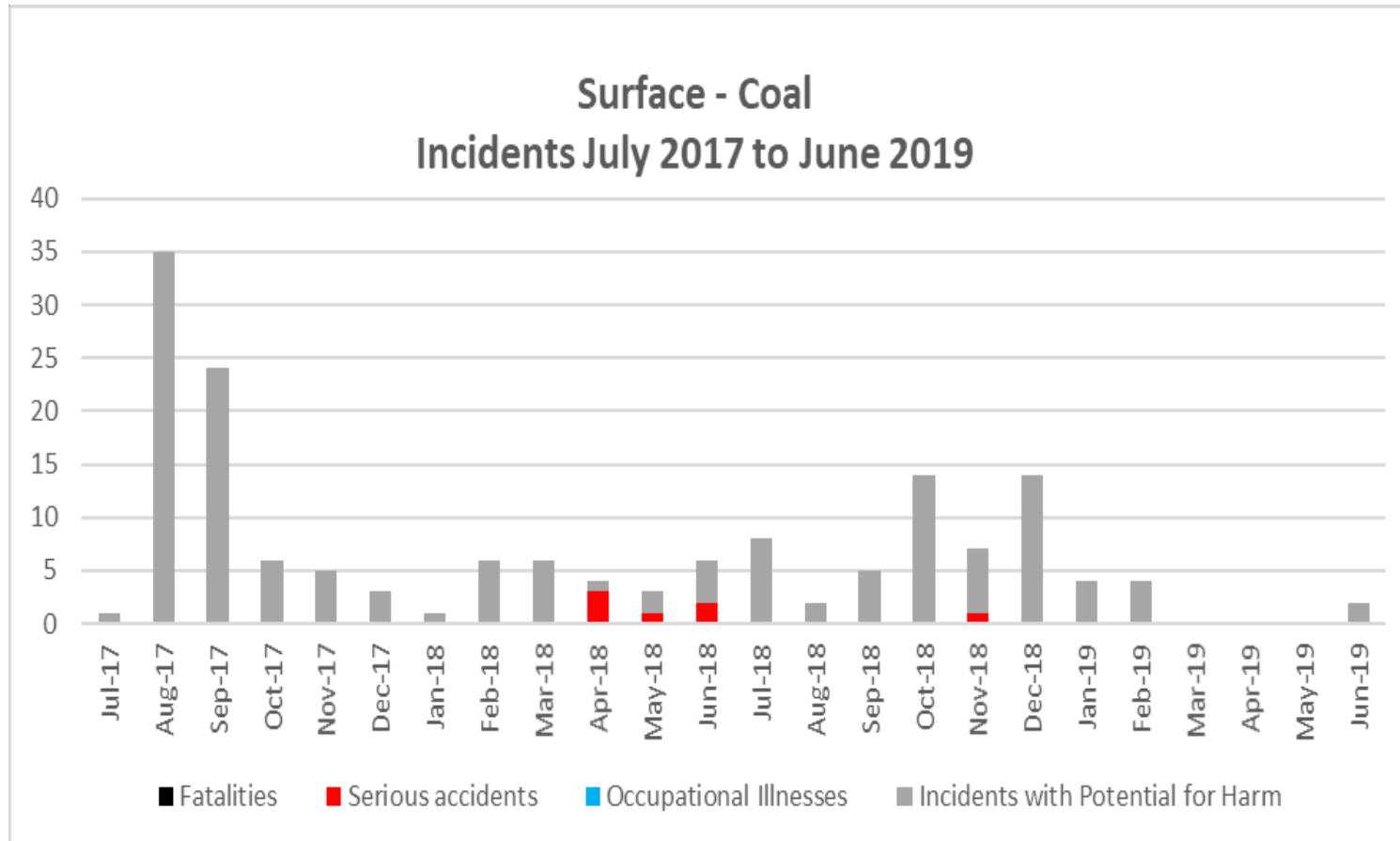


Surface - Metalliferous Incidents April 2019 to June 2019



MinEx Safety Statistics – Q2 2019

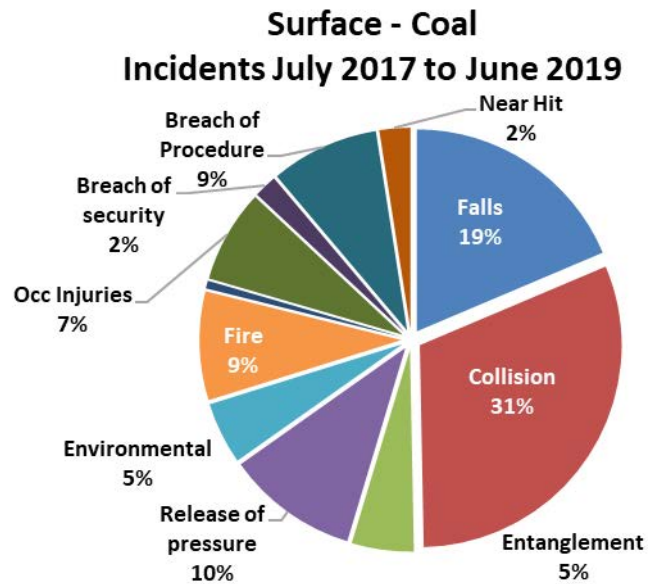
High potential incidents: Surface – Coal, July 2017 to June 2019



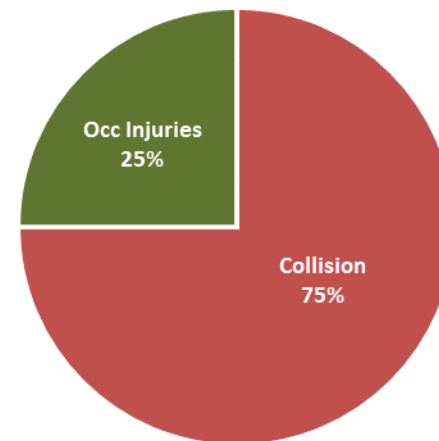
Note: No serious accidents collected before April 2018

MinEx Safety Statistics – Q2 2019

Incident breakdown: Surface – Coal incident breakdown

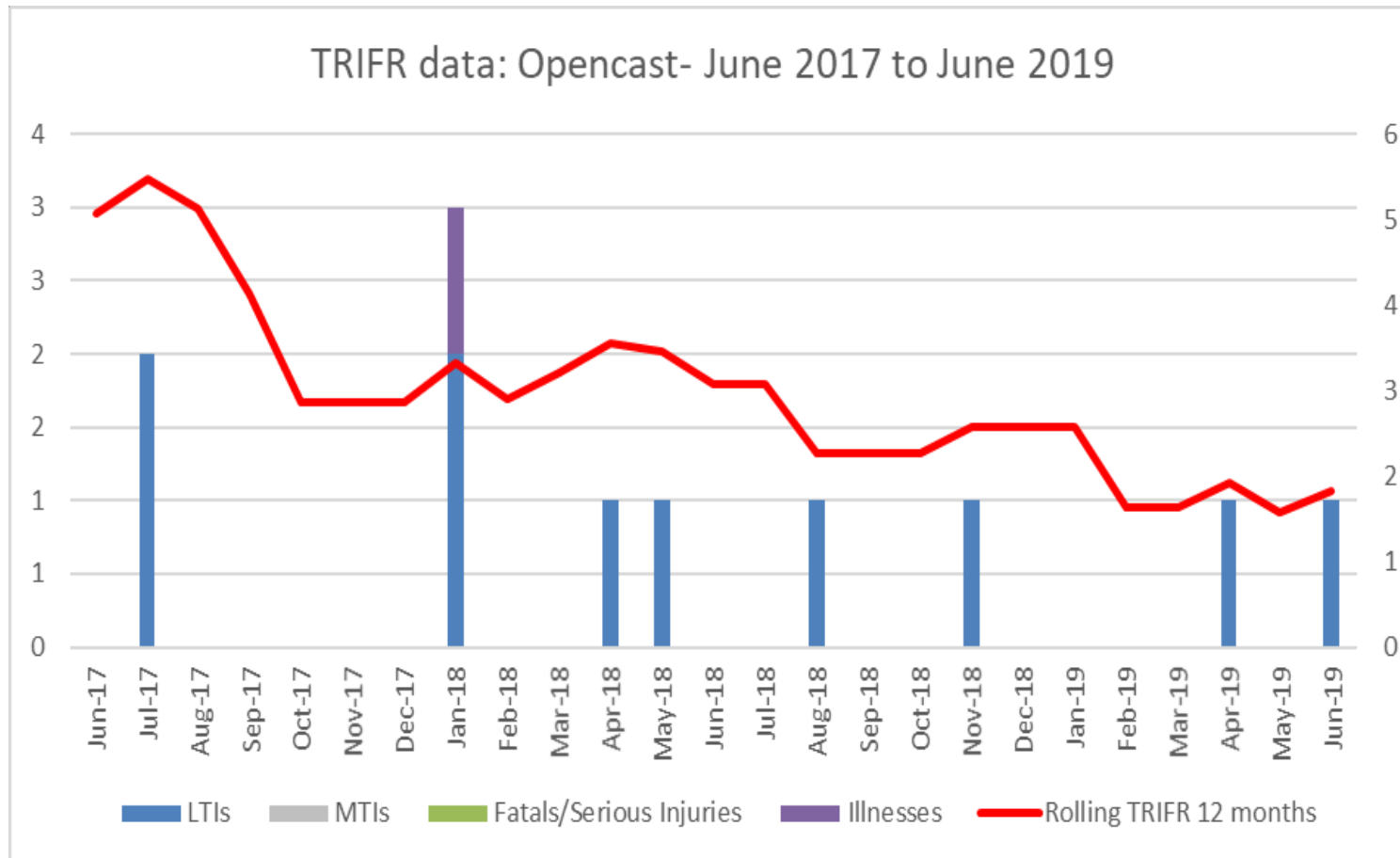


Surface - Coal Incidents April 2019 to June 2019



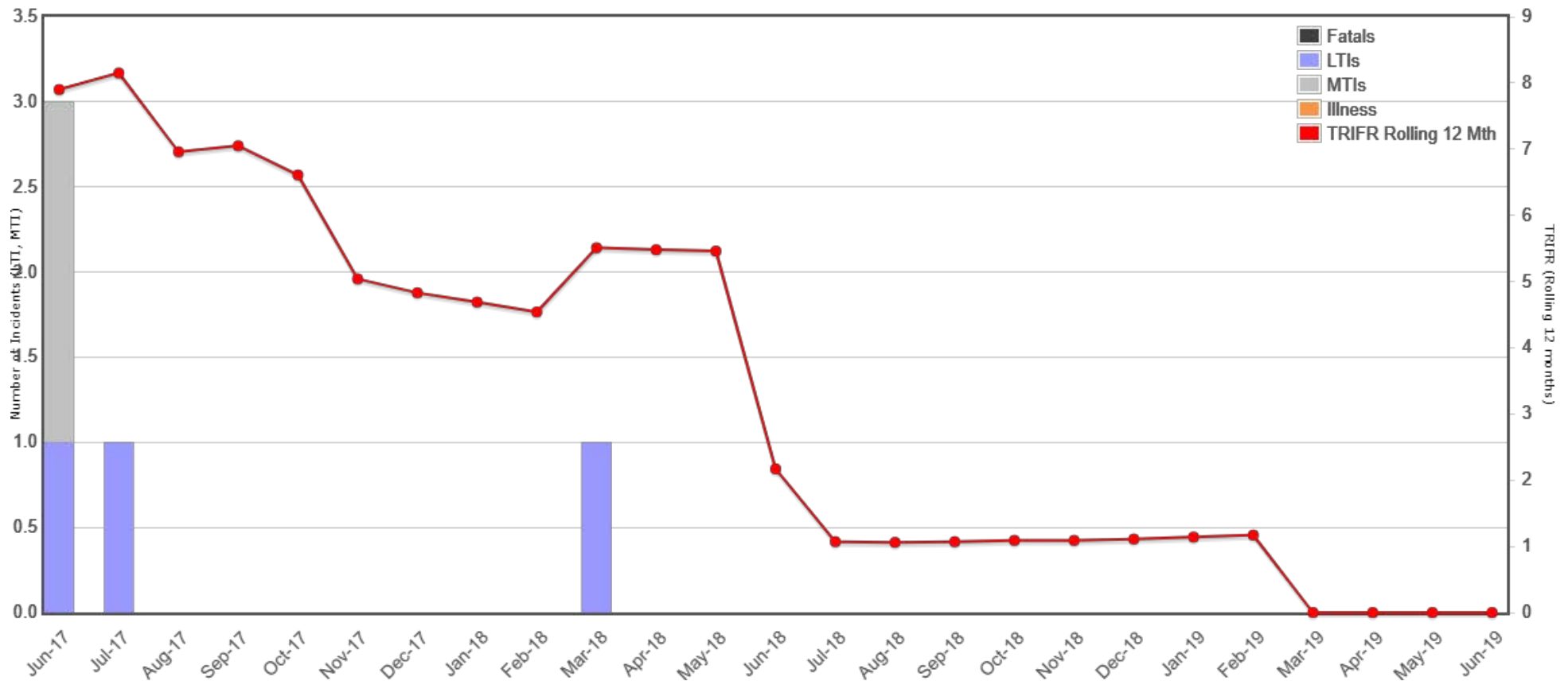
MinEx Safety Statistics – Q2 2019

TRIFR data: Surface – Opencast, March 2017 to June 2019



MinEx Safety Statistics – Q2 2019

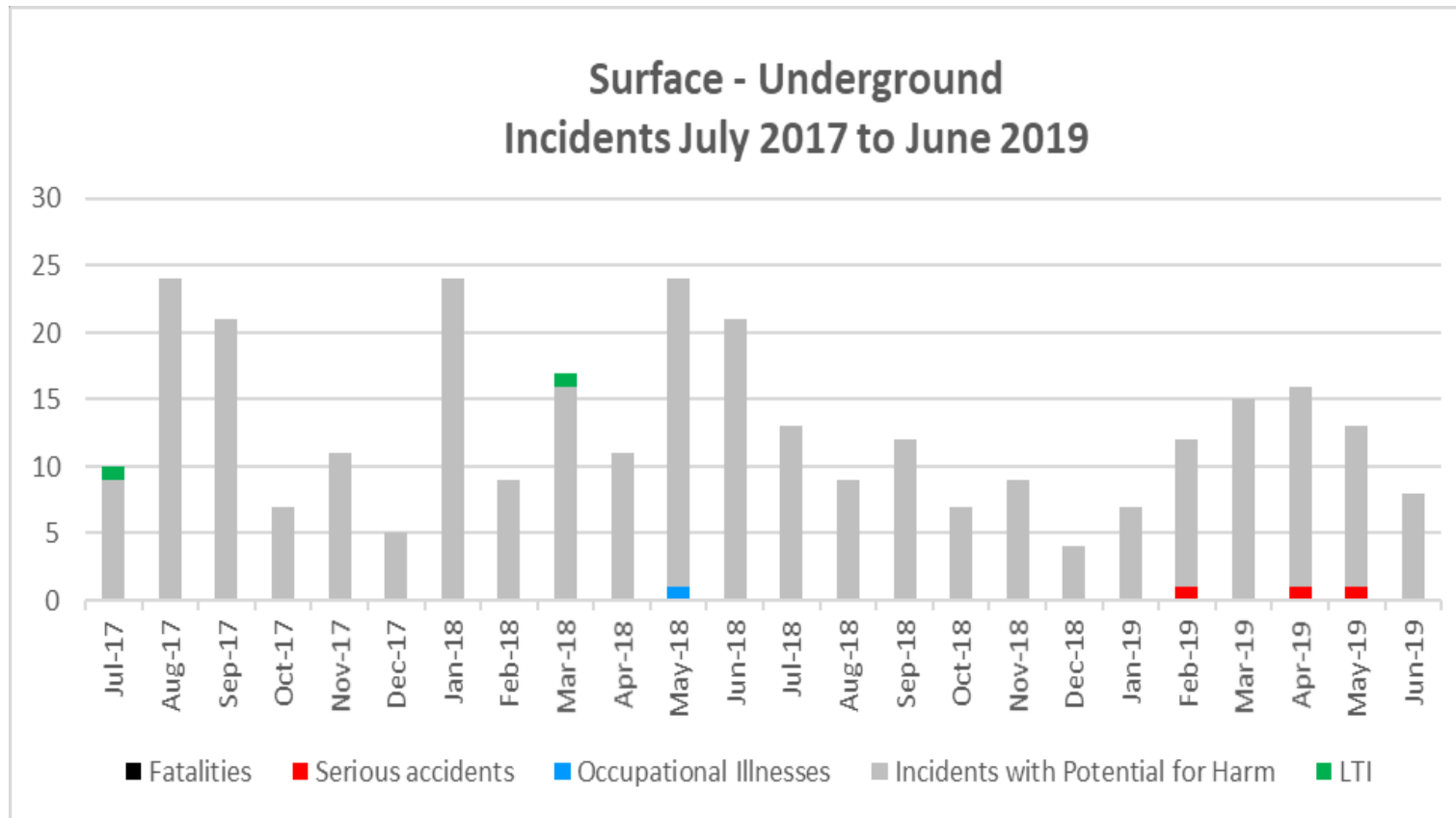
TRIFR data: Underground – March 2017 to June 2019



Note: No MTI data collected after June 2017

MinEx Safety Statistics – Q2 2019

High potential incidents: Underground – July 2017 to June 2019



Note: No serious accidents collected before April 2018

MinEx Safety Statistics – Q2 2019

Incident breakdown: Underground – Incident breakdown

