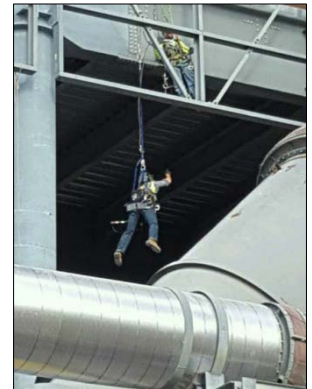


## *Metal and Nonmetal Mine Safety Alert*

### *Preventing Fall of Person Accidents*

In the past decade, 29 miners have died at metal and nonmetal (MNM) mines when they fell from the area where they worked, such as heavy equipment, ladders and conveyor walkways.



### *Best Practices*

- Make mobile or stationary platforms, from which miners may work, available at locations where there is risk of falling.
- Assign a safety harness and lanyard to each miner who may work at an elevated height or locations where a fall can occur.
- Construct stable, durable and secure anchor points for miners to attach lanyards at all locations where a fall hazard exists, and inspect these anchor points frequently. Post signage, "FALL PROTECTION IS REQUIRED HERE".
- Place stable and secure physical barriers around all floor openings through which miners may fall. Yellow caution tape is not acceptable to use as a barrier.
- Design work areas and develop job tasks that minimize fall hazards.
- Mine operators and independent contractors must always comply with these four standards that help prevent falls from occurring: §§56/57.11001 Safe access and §§56/57.15005 Safety belts and lines.