

SAFETY ALERT

INCIDENT

Fatality – Electrical contractor fall from height

INCIDENT DATE

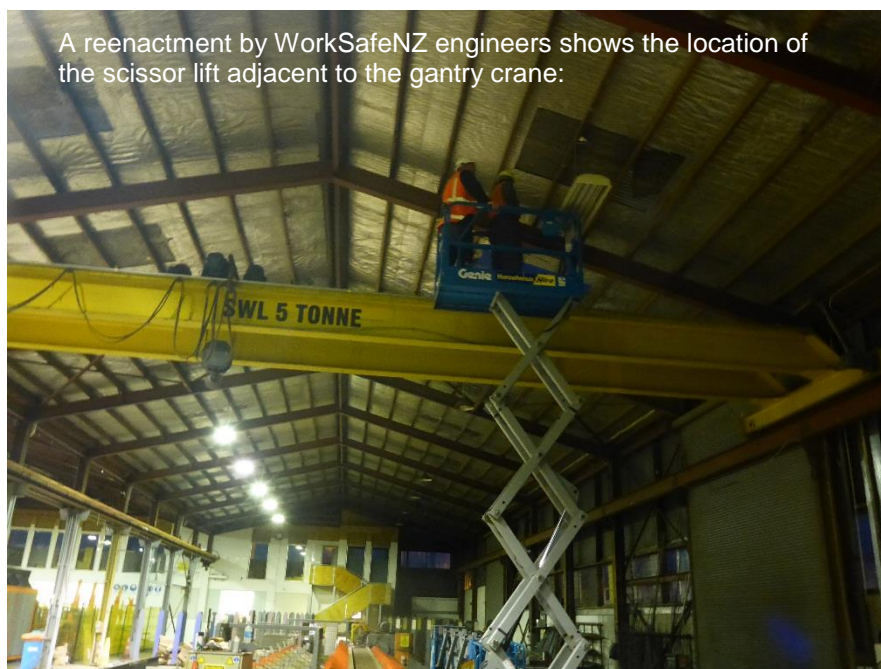
26-11-2018

WHAT HAPPENED?

At 12:15 pm on Monday, an electrical contractor from a local company was performing lighting maintenance work from an Elevated Work Platform (scissor lift).

A gantry crane, that was being used to move product in the area, came into contact with the scissor lift, causing the lift and the contractor to topple and fall 5.89 metres.

The team performed CPR until emergency services arrived. The contractor died at the scene from injuries sustained during the fall.

**IMPORTANT REMINDER FOR ALL OF US (pre-investigation)**

Apply **above the line controls** in high risk situations:

- **Eliminate.** Can the work be completed at a different time (e.g., maintenance work after hours)?
- **Isolate.** Can the work activities be isolated from each other (e.g., exclusion zones)?
- **Engineering/LOTO.** Has the individual at risk (e.g., the contractor) applied their lock to the isolation?

NOTE: It's important to think through who is exposed to *all hazardous energy* on site (e.g., crane movements), not just the work being done (e.g., electrical) and ensure those affected apply their own lock.

MinEx

Safety Alert Comment

When conducting maintenance please ensure all plant being worked on is isolated and all plant that may impact on your work area is also isolated.